



KONICA MINOLTA



NAVIGATING A NEW ERA IN HEALTHCARE SECURITY

Secure Your Healthcare Organization with Cutting-Edge Solutions

Giving Shape to Ideas



**SIMPLIFY
IT SYSTEMS**



**EMBRACE
SECURITY
AUTOMATION**



**PROTECT
PATIENT
DATA**

The healthcare industry faces unique and continuous security challenges. Attacks have accelerated and go beyond business and operations, unfolding in various scenarios that jeopardize continuous care and lives. At Konica Minolta, our top priority is enhancing patient outcomes by managing risks, averting breaches, and accelerating incident response.

This trend in cyber attacks has continued in 2024 with significant attacks against large systems and health service providers.



PHI is among the

TOP 5

types of data most commonly compromised in social engineering attacks



\$10.93 million

is the average breach cost in the healthcare industry



46 hospital systems (141 hospitals)

were recently targeted with ransomware attacks that disrupted business, and in some cases access to systems, schedules and EHR records

Given this escalated threat from multiple bad actors, healthcare organizations must adopt a security approach founded on resilience. This approach should proactively thwart attacks, shorten response times, safeguard all devices and data, and ensure seamless care.

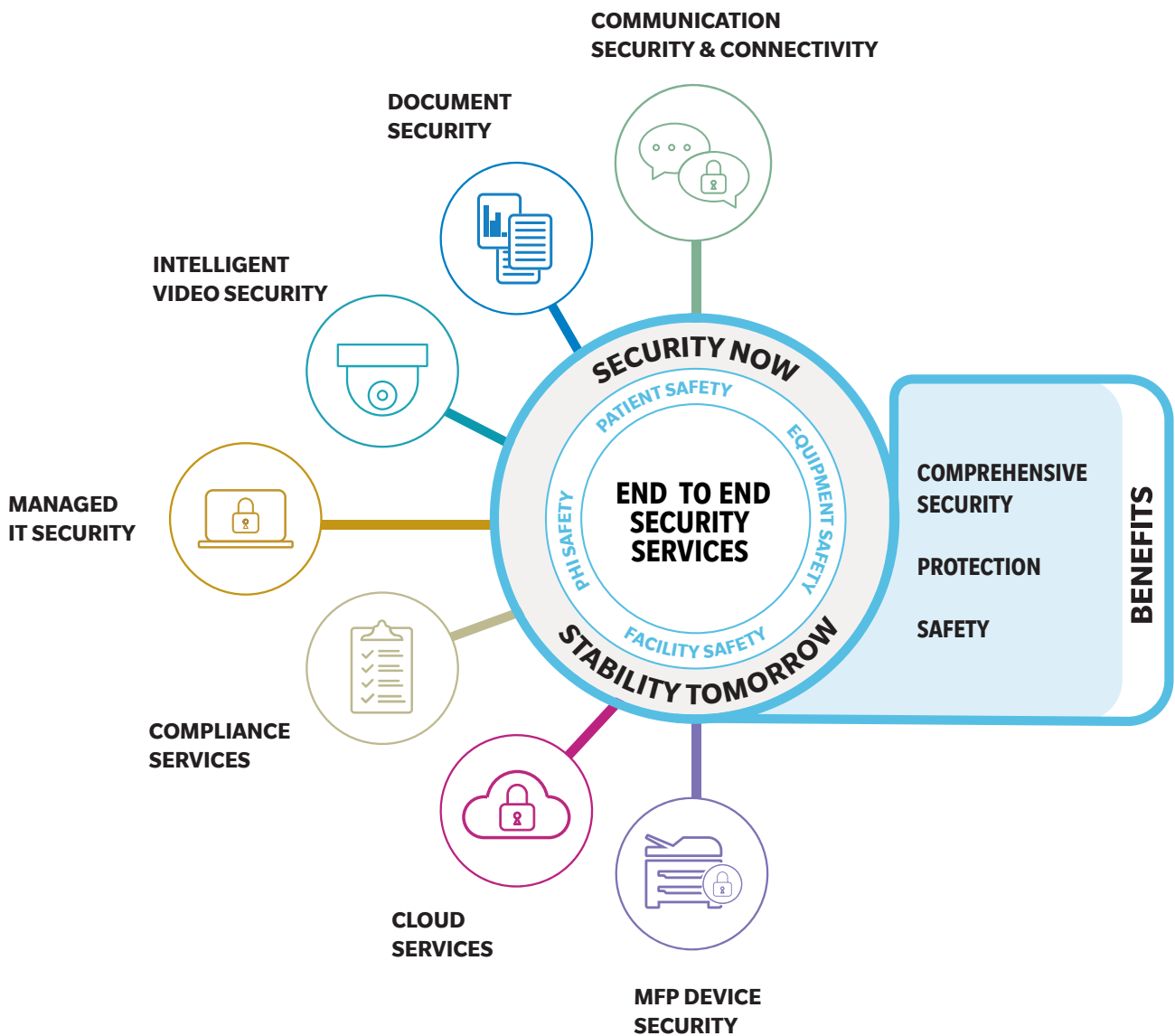
Discover how Konica Minolta tackles this with its 360° approach, designed to enhance healthcare security across multiple areas of your business.

Let's prioritize security to safeguard the future of healthcare.

360° HEALTHCARE SECURITY

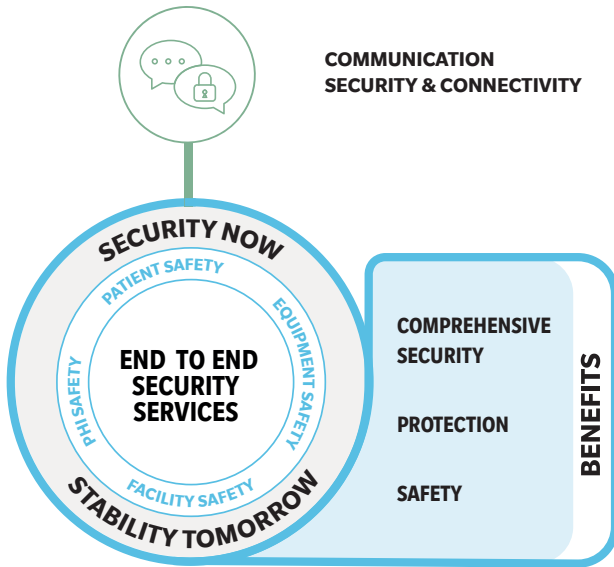
In line with HIPAA’s privacy and security regulations, Konica Minolta’s 360° healthcare security approach drives customer success through its comprehensive solution and service portfolio that goes beyond basic conformity.

By integrating advanced security measures throughout all healthcare operations to protect data, patients, employees, equipment, network, infrastructure and facilities, Konica Minolta’s solutions not only reduce exposure to financial risk and legal liabilities, but more importantly, safeguard your most important asset - your patients.



COMMUNICATION SECURITY & CONNECTIVITY

At least 70% of healthcare providers still exchange medical information by fax *Bloomberg



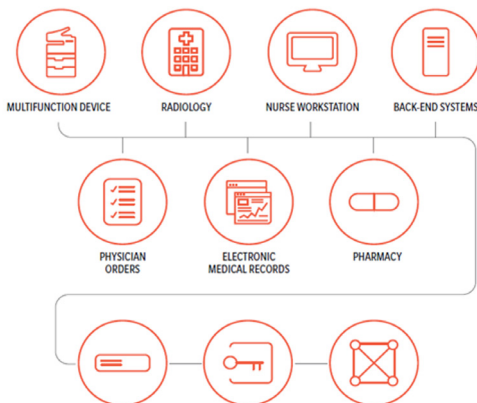
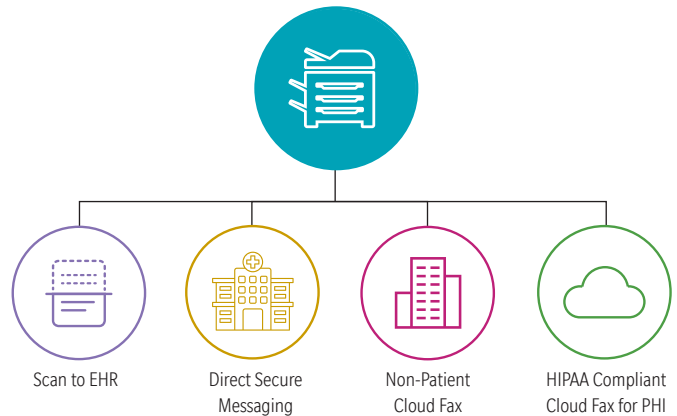
Efficient sharing of Protected Health Information (PHI) is crucial for seamless care coordination. By harnessing technology like secure messaging, cloud fax, and connected devices, healthcare providers can safeguard patient data while enhancing the way they collaborate and share information.

Better PHI sharing leads to Improved Patient Care

- **Streamlines Processes:** Supports efficient operations across healthcare systems
- **Regulatory Compliance:** Ensures practices meet HIPAA and other legal requirements

Shared PHI reduces administrative burdens & enhances care coordination for Extended Care

- EHR-integrated scanning to a variety of systems
- Direct Messaging for secure PHI Exchange
- HIPAA-Compliant Cloud Fax

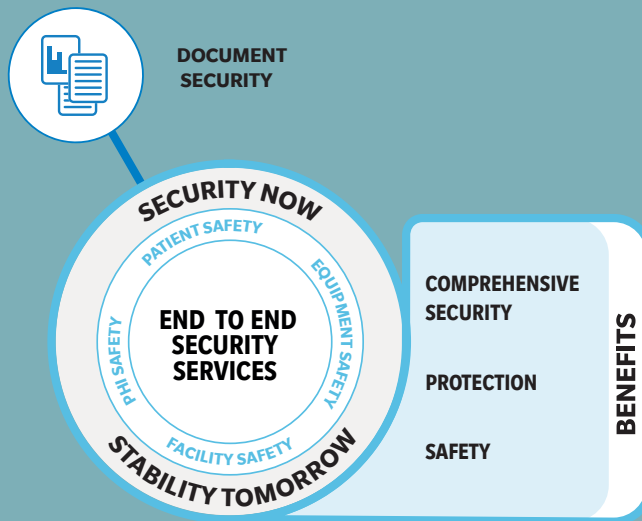


Enterprise Cloud Fax Solutions Eliminate Reliance on Costly Analog Fax Lines

- Data Encryption
- User Authentication
- Available EHR integration, including Epic
- Konica Minolta optional MFP device Connector

DOCUMENT SECURITY

In one single incident, 2.6 million people were impacted by a healthcare organization's failure to safeguard sensitive medical information. *The HIPAA Journal



Safeguarding sensitive patient information and maintaining confidentiality is paramount for healthcare organizations. Ensuring secure document processing protects against potential breaches but also enhances operational efficiency by streamlining clinical and administrative processes. By implementing robust solutions like advanced document workflows to enhance electronic health record systems, healthcare providers can expedite clinical decision-making, enable remote access for essential stakeholders, and comply with regulatory requirements.

Secure Document Capture, Workflow & Output for Healthcare



SECURE CAPTURE & CONNECTIVITY

Advanced workflow capabilities collect documents from various sources and applies automation, including:

- Secure scanning to the EHR via HL7
- Automated workflow initiated from fax or scan capture



SECURE PRINT RELEASE FROM EHR

Output from EHR systems can be printed and securely retrieved by the appropriate user, enabling:

- Direct connectivity to EHR, including Epic (listed on the Epic Showroom)
- Authentication-based document release increase HIPAA compliance



SECURE PRESCRIPTION PRINT

To reduce expenses related to pre-printed RX forms, the solution automatically applies the following CMS-required security features to plain paper, including:

- Anti-Copy & Anti-Erasure pantograph
- Pharmacy Alerts

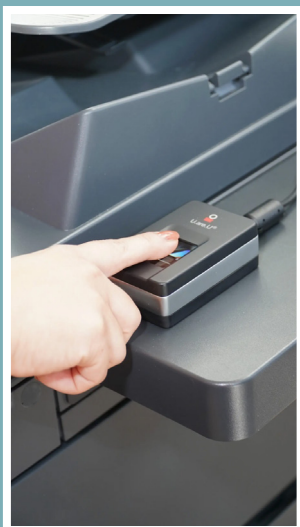
Intelligent Information Management

Enables the secure creation of electronic patient records for quick clinical decision-making. It allows secure remote access for healthcare professionals and insurance providers, as well as mobile experts in remote clinics or hospitals.



Managed Print Services

Enhance security by monitoring devices, implementing control measures, and enforcing credential requirements for print jobs, preventing sensitive data exposure. The benefits of document and data security with Konica Minolta extend outward, creating a foundation where patients can trust in the privacy of their healthcare data, healthcare providers can improve efficiency and compliance, and stakeholders can engage in a tech-forward, professional environment that caters to their needs.



Advanced Biometric Authentication

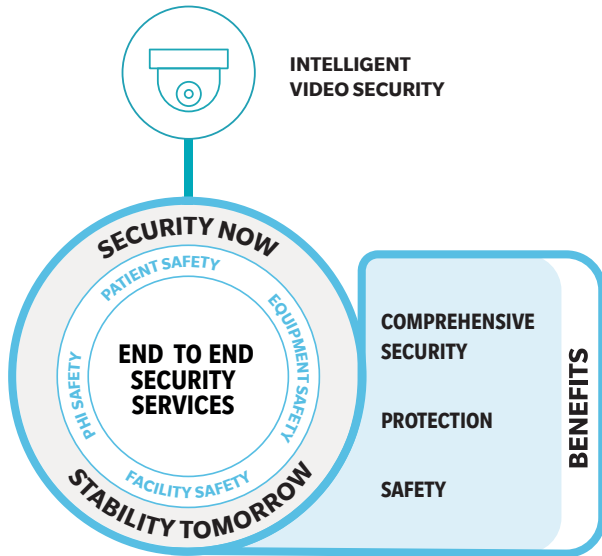
Konica Minolta's Advanced Authentication Manager (AAM) provides authentication solutions that utilize user biometric identification rather than the standard passwords or IC cards for print management applications. Konica Minolta's Advanced Authentication Manager provides authentication solutions that utilize user biometric identification rather than the standard passwords or IC cards for print management applications running on Konica Minolta bizhub devices.

This solution has been honored with several awards including the 'ASTORS' Homeland Security Awards, "The GOVIES" Government Security Awards and the Global Infosec Awards.



INTELLIGENT VIDEO SECURITY

Almost 50% of healthcare organizations rate their video surveillance coverage as “fair,” “below par,” or “poor,”



In healthcare, personal interactions underscore the need for thorough oversight. Challenges are diverse, from memory care residents wandering off to walk-in clinic visitors seeking prompt care.

From patient safety to litigation support, Konica Minolta’s **Video Solution Services** provide the data, clarity, reliability, and flexibility that you need to respond to alerts, provide internal and external security, and employ the level of detection that you need.

Our cameras have special features that leverage artificial intelligence to provide detection of behavioral movements or patterns. With this technology facility security teams can detect a potential problem based on the actions they capture, and provide information to prevent a larger problem.

From Object Detection to People Detection to Smoke Detection – the cameras recognize when something is not right.

- Detects Smoke
- Detects Heat
- Detects Fire
- Recognizes Vehicle License Plates
- Detects Overcrowded Zones
- Detects Loitering
- Face Detection
- Detection of Overcrowding Situations
- Counting People
- Identification of Objects Left Behind (e.g. bag)

MANAGED IT SECURITY



All Covered, a Konica Minolta company, offers a suite of security services allowing your organization to gain operational efficiencies by protecting your data and environment at a predictable cost, while freeing IT resources to focus on strategic initiatives.

Unified Threat Management (UTM)

UTM offers you advanced threat management and detection at the access point of your network environment. Its capabilities include web filtering, DNS filtering, antivirus, and VPN support. The All Covered Remote Support Center is available 24 hours a day, 7 days a week to open support request incidents.

Security Information and Event Management (SIEM)

Proactive threat hunting, log correlation, historical data lookup, and real time threat detection and investigation capabilities with a centralized log management platform. Identified threats are analyzed by a trained & skilled analyst team who conducts additional contextual investigation and threat hunting with coverage 24 x 7 x 365.

Managed Endpoint Detection & Response (MEDR)

All Covered's Managed Endpoint Detection & Response (MEDR) service, powered by SentinelOne, is designed to protect supported endpoints and respond to neutralize possible threats before they can compromise your operations.

Penetration Testing

Using the same tools and techniques as hackers to identify and exploit vulnerabilities our offensive security team simulates an attack by a malicious party on a network or application to identify flaws in an Organization's security providing real-world visibility into threats facing their infrastructure and applications.

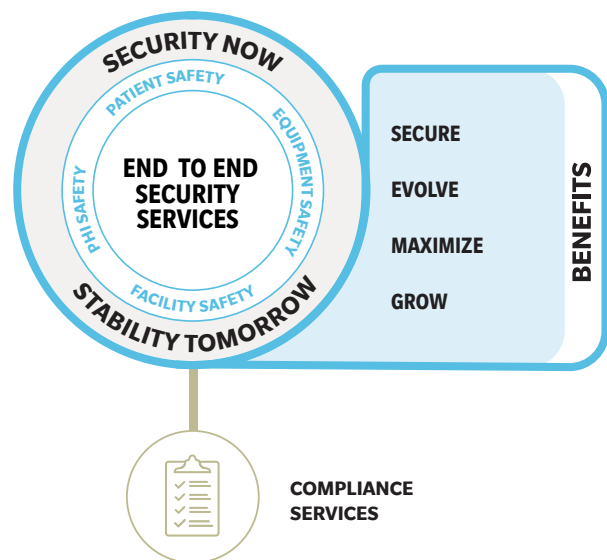
COMPLIANCE SERVICES

The Healthcare Compliance team at All Covered, a Konica Minolta company, can help you meet the security and compliance challenges of the modern world.

Comprehensive safeguards are necessary to protect your organization from threats. Build the dynamic policy framework needed to implement strong security measures without adding strain on your staff and budget, reducing compliance risks and keeping patient care your top priority. All Covered's managed healthcare compliance services can include both assessment and remediation.

To do so, you can choose from solutions including:

- Policy and procedure review and development
- Security risk assessment
- HIPAA gap analysis
- Corrective action plans
- Technical vulnerability assessments
- Security and compliance training
- Assessments against other compliance frameworks, including but not limited to ISO 27001 - 27002, NIST CSF, Cybersecurity Maturity Model Certification (CMMC), CIS Top 18, and NIST SP 800-53 and 171, create more efficiency and security now and for the long-term with comprehensive healthcare compliance services.



The All Covered compliance team will do a thorough risk analysis of the entire network, as well as document remediation steps. With their compliance portal, they assist organizations in maintaining their policies and procedures with an audit log, perform continuous vulnerability scans, and provide a compliance dashboard mapping against the required controls. They also provide online and onsite training services on security and HIPAA for employees.

CLOUD SERVICES

All Covered, a Konica Minolta company, has both public and private cloud solutions to streamline data integration from clinical systems records while safeguarding protected health information.



Their cloud services portfolio includes:

- Cloud Servers and Cloud Backup
- Private Cloud
- Business Continuity
- Cloud Email, Anti-Spam, Archiving
- All Covered Cloud & Microsoft Azure

Additionally, All Covered has a dedicated Healthcare Cloud which is a highly available, compliant, and scalable hosted infrastructure specifically designed for the healthcare industry. Rather than purchasing on-site servers, costly data center space, and navigating the complexity of HIPAA compliance within IT, the hosted cloud allows practices to focus more on patient care while maintaining a secure and compliant environment.

All Covered is a Microsoft Healthcare Preferred Provider.



Microsoft preferred solution

MFP DEVICE SECURITY

When managing sensitive data on endpoint devices, safeguarding against malware, internal and external threats, and unauthorized access is crucial. Implementing security measures is only part of the solution. You must also ensure your Multi-Function Printer (MFP) is consistently protected.

MFP DEVICE
SECURITY



BENEFITS

- RELIABLE
- SECURE
- CONSISTENT
- SCALEABLE



KONICA MINOLTA'S LAYERED SECURITY APPROACH:

Any breach or mishandling of PHI can lead to severe consequences—both in terms of fines and loss of patient trust. Many healthcare providers may not realize that printers, scanners, and copiers are often vulnerable points in their data security strategy.

Konica Minolta bizhub MFPs offer a **multi-layered approach** to security, specifically designed to meet healthcare industry standards and regulations to safeguard your organization and patient data across all phases—whether it's being scanned, printed, stored or shared with your referral sources. The following security model outlines recommendations your organization should consider regarding your office technology:

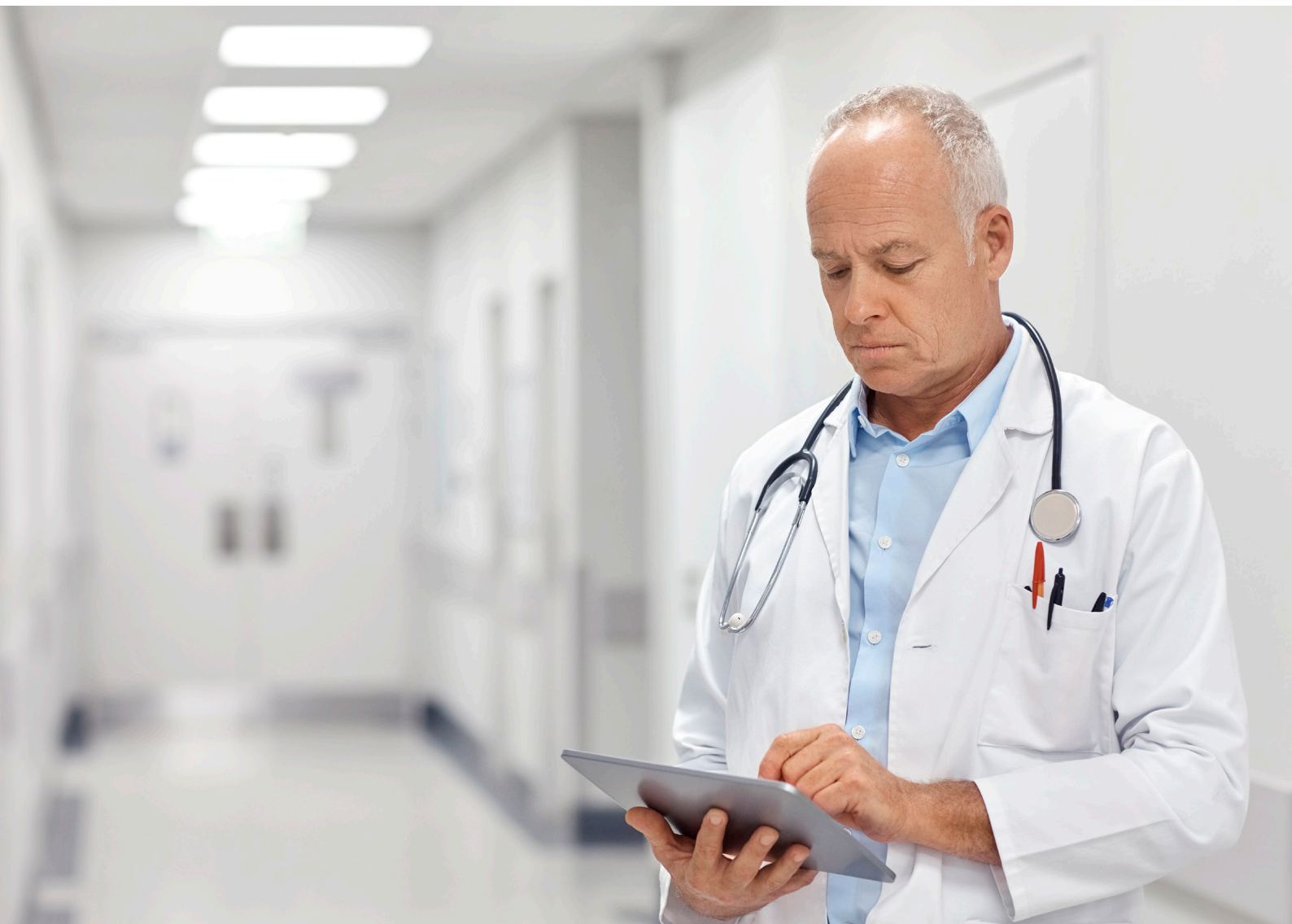


LEVEL	OUTCOME
5	CENTRALIZED SECURITY MANAGEMENT <ul style="list-style-type: none"> Centralized monitoring and management of device security policies for the fleet of Konica Minolta MFPs Dashboard showing security status of the fleet of Konica Minolta MFPs Auto-remediation to fix compromised security policy settings
4	DATA LOSS PREVENTION <ul style="list-style-type: none"> Document level interrogation of MFP activity Alerts for document security policy MFP violations Detailed logging of all device activity including print, copy, scan and fax
3	DOCUMENT SECURITY <ul style="list-style-type: none"> Automatic deletion of inactive files in secure print queues Encryption of print jobs when transmitting over the network Auditing and reporting on document activity for compliance Watermarking of sensitive print documents
2	ID & ACCESS CONTROL <ul style="list-style-type: none"> Authentication required to access functions Single Sign On Biometric Authentication option Secure pull printing
1	BASIC SECURITY <ul style="list-style-type: none"> Device storage encryption Automatic deletion of files in a user box Antivirus scanning of documents Graphical representation of MFP Security status on the MFP panel

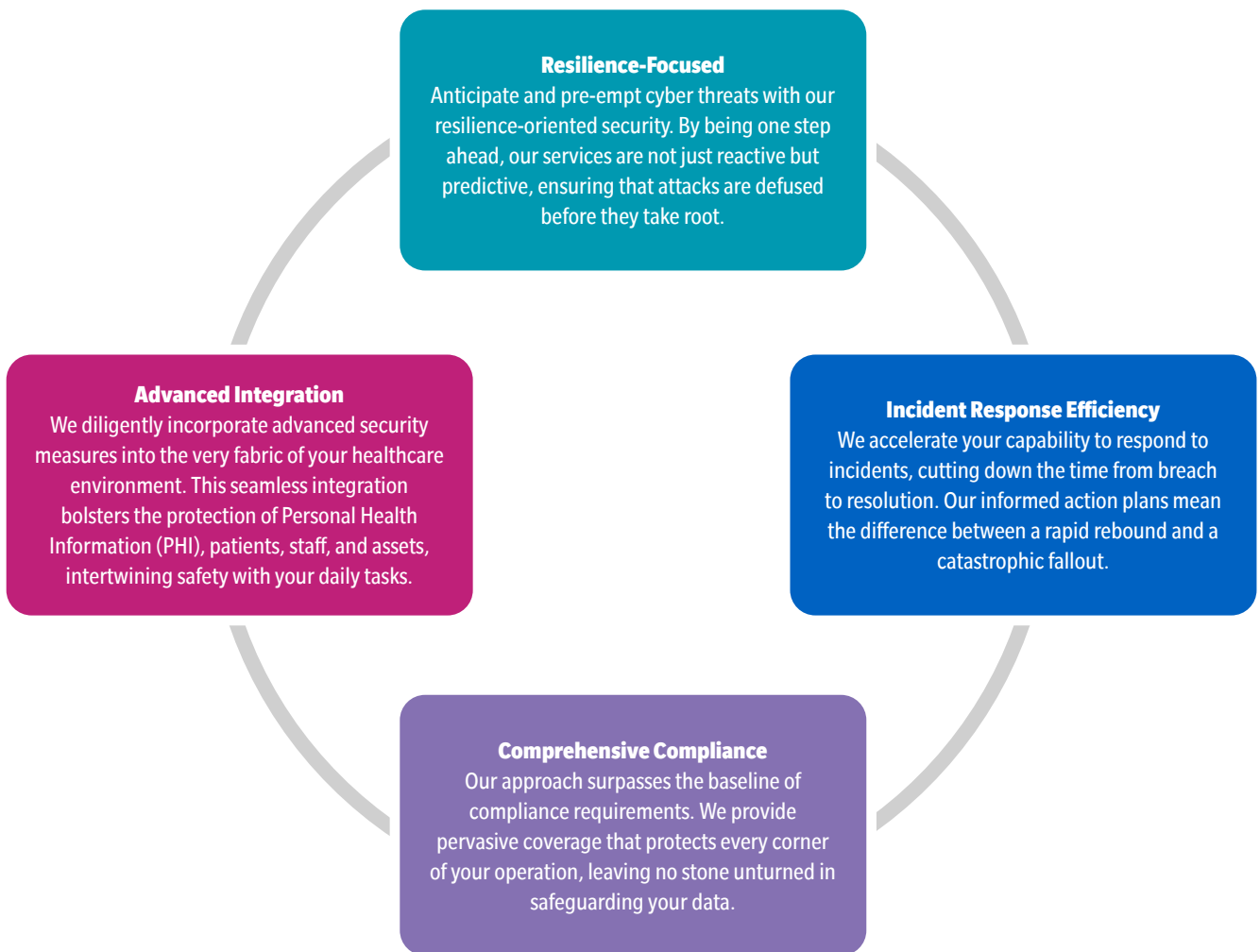
WHY CHOOSE KONICA MINOLTA FOR YOUR HEALTHCARE SECURITY

At Konica Minolta, we understand that the stakes are immensely high in the healthcare industry. That's why we've tailored a service where patient outcomes drive our innovative security solutions – a partner you can trust to stand guard over your most sensitive data and operations.

We've dedicated ourselves to equipping healthcare facilities with a 360° approach of tools and strategies to construct an unbreachable fortress around all aspects of patient care.



THE 360° APPROACH



Our 360° approach translates into real-world resilience, operational integrity, and the assurance that enables healthcare professionals to focus on what truly matters – the patients.

Let's prioritize security to safeguard the future of healthcare.



PARTNERSHIP

Konica Minolta can help give shape to your ideas and partner with you to achieve your corporate objectives. Contact us to realize opportunities in:

INFORMATION MANAGEMENT

Intelligent Information Management (IIM)
Document Management
Automated Workflow Solutions
Business Process Automation
Security and Compliance
Mobility

IT SERVICES

Application Services
Cloud Services
IT Security
Managed IT Services
IT Consulting & Projects

TECHNOLOGY

Office Multifunction Business Solutions
Commercial and Production Printers
Wide Format Printers
Laptops, Desktops and Computer Hardware
Servers and Networking Equipment
Managed Print Services (MPS)
Managed Enterprise Services
Video Security Solutions (VSS)



KONICA MINOLTA

KONICA MINOLTA BUSINESS SOLUTIONS U.S.A., INC.
100 Williams Drive, Ramsey, New Jersey 07446

[CountOnKonicaMinolta.com](https://www.CountOnKonicaMinolta.com)



© 2024 KONICA MINOLTA BUSINESS SOLUTIONS U.S.A., INC. All rights reserved. Reproduction in whole or in part without written permission is prohibited. KONICA MINOLTA and the KONICA MINOLTA logo are registered trademarks or trademarks of KONICA MINOLTA, INC. All other product and brand names are trademarks or registered trademarks of their respective companies or organizations. All features and functions described here may not be available on some products. Design & specifications are subject to change without notice.